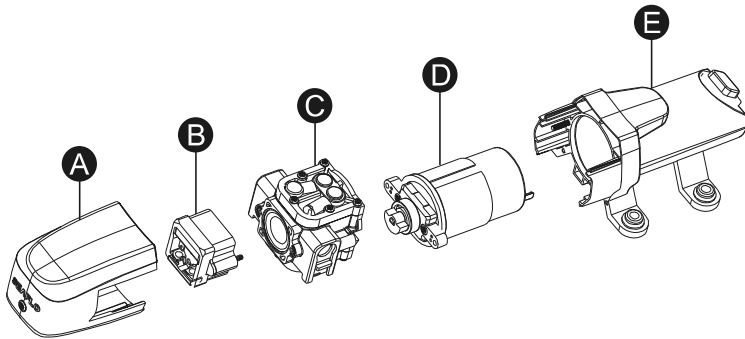


SEAFLO[®]

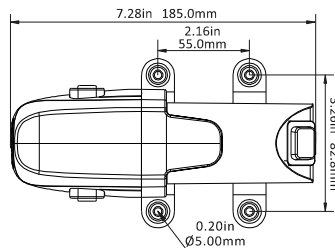
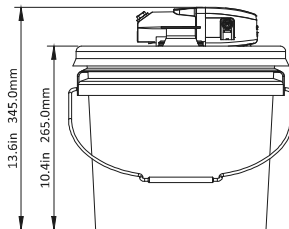
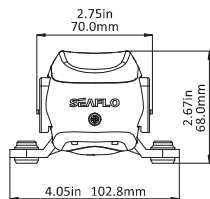
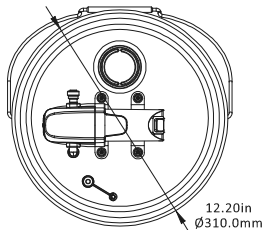
OIL CHANGE SYSTEM

Instruction Manual



Key	Description	Quantity
A	Cover	1
B	Pressure switch	1
C	Pump head assembly	1
D	Motor assembly	1
E	Motor cover assembly	1

DIMENSION DRAWING



SFOCS1-015-01

SFOCS1-015-02

FEATURES

Pump body: PA+30%GF

Diaphragm: TPE, oil resistant

Valves: NBR, oil resistant

Motor: 12V DC with integral power switch

Receiver: Plastic with 3.7 Gal. (14.0L) (maximum) capacity bucket (only SFOCS1-015-01)

Battery leads: 6 ft. (2.0m) with alligator clips

Suction tube: 8 ft. (2.4m), oil & heat resistant

Drain pipe: 3 m of 10/14 mm (inner/outer diameter) transparent PU tube (only SFOCS1-015-02)

Weight (empty): 3.7lbs (1.69 kg) - SFOCS1-015-01

2.4lbs (1.10 kg) - SFOCS1-015-02

Model Number	Voltage	Amp Draw	Fuse Size	Open Flow	Dimension(L*W*H)	Receiver
SFOCS1-015-01	12V DC	2A	5A	1.5GPM/5.6LPM	310x310x360mm	yes
SFOCS1-015-02	12V DC	2A	5A	1.5GPM/5.6LPM	185x103x68 mm	no




OPERATING INSTRUCTIONS

1. Run the engine for approximately 5 minutes to heat oil to approximately 160°F (71°C), then shut off engine prior to oil removal.
2. Insert 1/4"(6mm) tube into pump inlet port and be sure that it is securely in place.
3. Unscrew the pour spout to vent container prior to operating pump to allow air to vent.
4. With the pump switch in the off position (to avoid sparks), clamp the power-leads' alligator clips to a 12V DC battery (red to positive; black to negative).
5. With the engine off, remove the dipstick, and insert the 1/4"(6mm) oil change probe through the dipstick tube until it contacts the bottom of the oil pan. It may help to measure the probe against the dipstick, add an inch and mark the probe. Do not push the probe too far into the dipstick tube or it may curl up and out of the oil. It may be useful to tape the probe in place during evacuation.
6. To evacuate the oil, switch on the pump using the rocker switch at the rear of the motor. Watch for flow in the probe. If no flow appears in 15 seconds, check the probe for sediment blockage. Clean the probe and reset it 1/4" (6mm) off the pan.
7. The pump will speed up when the oil has been removed. An average 5 quart (5 liters) oil capacity engine will take around 10 minutes to drain.
8. Switch off pump before removing alligator clips from the battery, to avoid sparks.
9. Remove probe from dipstick tube while wiping with a rag to prevent oil drips.
10. To empty the container, pull up the retractable pour spout and pour the oil into a suitable container for disposal/recycling.
11. For extended storage, flush pump with water based degreaser solution.

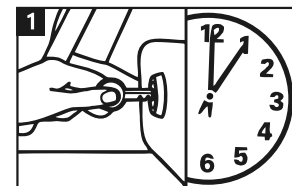
NOTICE: Always recycle used oil in compliance with federal and local legislation. Handle petroleum products in an environmentally responsible manner.

TO REMOVE LID FROM BUCKET :
tear strip as shown below

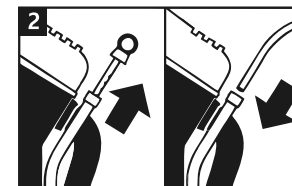


	WARNING Explosion Hazard. Motor switch must be in "OFF" position when connecting and disconnecting alligator clips to battery terminal and ground. The switch in an "ON" position can cause an electrical spark which can result in explosion. Injury or death can occur.
	WARNING Explosion Hazard. Take necessary precautions to rid area around battery of potentially explosive gases. Continue ventilation during oil changing procedure. Failure to do so can result in explosion. Injury or death can occur.
	WARNING Burn Hazard. Heated oil can cause burns. Wear protective gloves, clothing and safety glasses during the oil change process. Failure to do so may result in personal injury.

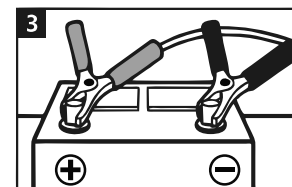
FOUR SIMPLE STEPS TO FAST, CLEAN OIL



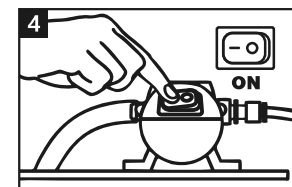
For quicker oil changes, start engine and run for 5 minutes to heat the oil.



Remove the dipstick and insert the suction probe.

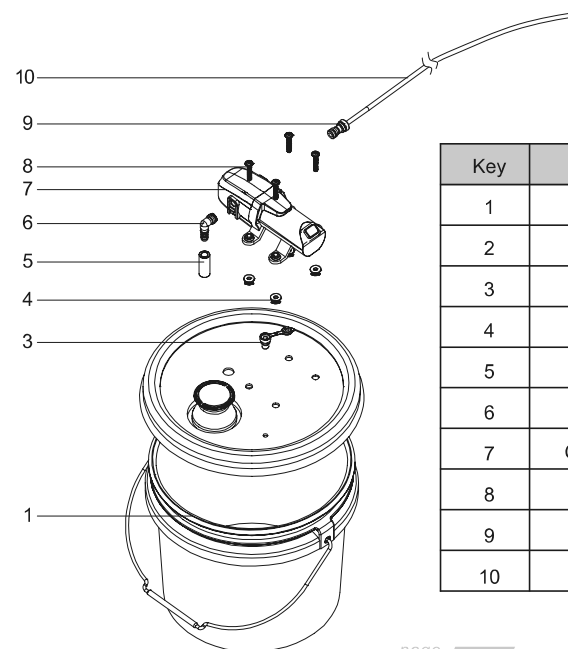


Attach the power cord clips to the engine's battery.
Red = Positive Black = Negative



Activate pump with switch on motor to drain crankcase.

REPAIR KITS



Key	Description	Quantity
1	Receiver	1
2	Lid	1
3	Vent hole	1
4	Nut	4
5	Outlet pipe	1
6	23F002	1
7	Oil change pump	1
8	Screws	4
9	23F003	1
10	Suction tube	1