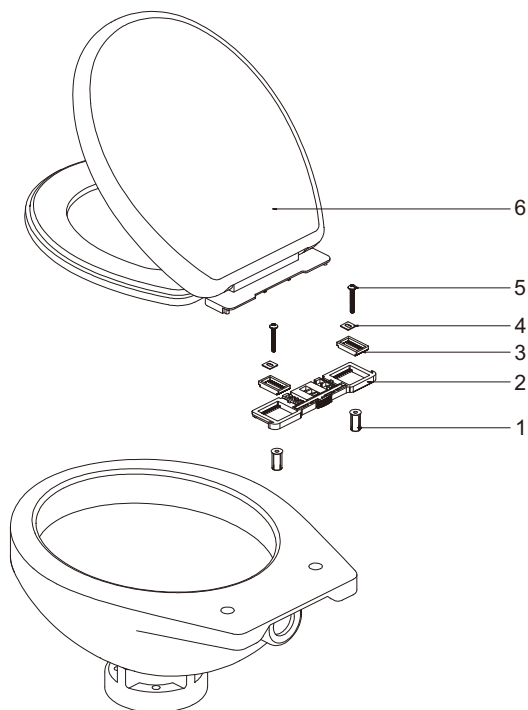


SEAFLO®

REGULAR TOILET LID INSTALLATION

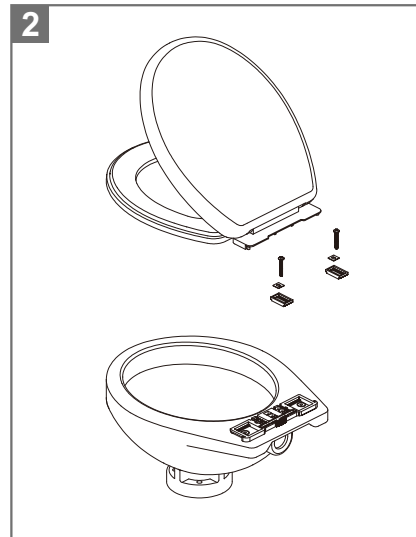
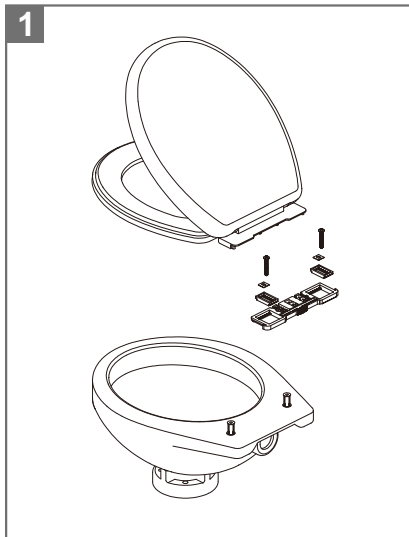
PART LIST



No.	Part Name	Quantity
1	Tension Nut	2
2	Base	1
3	Install Base	2
4	Plate	2
5	Bolt	2
6	Toilet Lid Assembly	1

INSTALLATION PROCEDURE

1. Place the tightening nut 1 in the mounting hole of the ceramic basin.
2. Place the base 2 above the mounting hole of the ceramic basin.



3. Install the mounting base 3 and the gasket 4 into the mounting groove of the base 2, lock the bolt 5 and the tension nut 1 to fix the base 2 on the ceramic basin.
4. Push the cover plate group 6 into the installation base 2 in the direction of the arrow, push the latch 2-1 on the base 2 to fix the cover plate on the ceramic base 2.

